

P-touch
E800T

brother
at your side



ENGINEERED FOR ELECTRICIANS

INDUSTRIAL TUBE AND LABEL PRINTER FOR ELECTRICAL MARKING

- Create labels up to 36mm in width
- Prints on HSe (Heat shrink) Tube
- Uses TZe Laminated tapes
- Switch between Tube and Label printing with Twin Engines
- Print more per label with additional printable height
- 360dpi Print Resolution
- Rechargeable Li-ion Battery (Optional add on)

www.brother.co.za

NEXT TIME

LABEL IT

Introducing Brother's PT-E800T

Get the job done in no time with this robust industrial tube and label printer.

PT-E800T



Twin Engines

Meet the first industrial printer with twin engines. With just one machine, you can print on tubes and labels up to 36mm with out the need to swop the label cartridges.



Zero Fuss

Switch between tube and label printing without replacing or re-inserting supplies. Need to replace worn-out parts? You can do it yourself in a few quick steps. It's that easy.



Maximum Printability

Print more on each label and ensure the legibility of your text with the benefit of additional printable height.

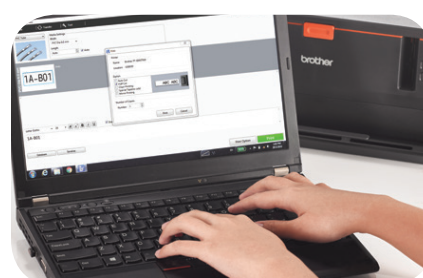
EASY PRINTING VIA PC ON TUBES AND LABELS

1



Use Brother Cable Label Tool

2

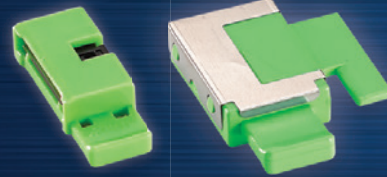


Select print options on your PC

SUPPLIES AND ACCESSORIES

Ensure the best printing results and a hassle-free experience with these handy accessories.

Included:



Tube cutter (PA-TC-001)

Cuts the tubes into the specified length quickly and professionally.



Cleaner (PA-CL-001)

Cleans the tube to ensure surface is dirt-free before printing.



Conveyance rollers (PA-RL-001, PA-RL-002 & PA-RL-003)

Ensures tubes move smoothly through the machine.



Ink ribbon (TR-100BK)

100m black ink ribbon used for tube printing.



TZe tapes

Suitable for both office and industrial use, our TZe standard laminated tapes are weatherproof, waterproof and resistant to wear and tear.



Perfectly Portable

Get the printer working wherever, whenever with the rechargeable Li-ion battery* and wireless capability.



Durable Labels

The printers are compatible with TZe tapes, the toughest laminated labels in the market. Ideal for industrial use, TZe is resistant to water, chemicals and harsh weather conditions.

*The rechargeable Li-ion battery and battery base have to be purchased separately.

3



Send the file to print

SPECS & COMPARISONS

PT-E800T

Tube	
Compatible Tube Diameter	2.5 - 6.5mm
Supported Tube Type	PVC
Max Print Height for Tube	6mm
Tube Print Speed	40mm/sec
Interface	USB
Label	
Tape Type	TZe, HGe, HSe (Heat Shrink Tube)
Maximum Tape Width	Up to 36mm
Label Print Resolution	360dpi
Label Print Speed	60mm/sec
Cutter	Auto and half cutter
General	
Machine Dimensions (W x D x H) mm	338 x 188 x 151
Tape Cassette (Included)	36mm Black on White 8M tape (TZe-261)
Black Ink Ribbon (included)	100m (TR-100BK)
Li-ion Battery (optional)	PA-BT-4000Li
Battery Base (optional)	PA-BB-003
AC Adapter (optional)	AD9100ESA

Optional Add-on:



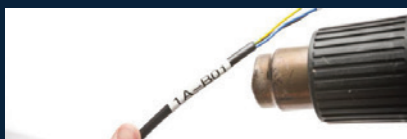
Rechargeable Li-ion Battery
(PA-BT-4000Li)
& Battery Base (PA-BB-003)

Keep your printer fully powered
when unplugged with the
rechargeable battery.



TZe Laminated Tape

Brother P-touch laminated TZe tapes consist of seven layers of materials, resulting in a thin yet extremely strong label. The thermal transfer ink is sandwiched between two protective layers of PET (polyester film), which protects the text against the effects of liquids, abrasion, temperature, chemicals and sunlight.



HSe Heat Shrink Tube

HSe tube is a printable heat shrink tubing designed for the PT-E300, PT-E550, PT-E800T and PT-D800W labelling machines to mark cables, fiber and wires. Will not work in other models.



Laminated



Temperature
Resistant



Water
Resistant



Fade
Resistant



Abrasion
Resistant



Chemical
Resistant



Easy
Peel



Strong
Adhesive

brother
at your side

Brother International South Africa

96 Sovereign Drive, Route 21 Corporate Park, Irene
Tel: +27 (0) 12 - 345 5332 Fax: +27 (0) 12 - 345 3886

www.brother.co.za <http://solutions.brother.com>



Working with you for a better environment
www.brotherearth.com

